

Technical Bulletin

Date April 17, 2008
Subject Promix Easy – Data
Download Software
Revision

NOTE: Software IS NOT Windows VISTA compatible yet. It works under Windows XP.

-Install software as instructed on Graco Manual 309-623



-After installation, one icon will appear on Desktop. The PromixEZ Log .

-The other component of the program, ProMixEZ Setup, does not appear on desktop. To get to it, click on Start → Programs → Graco folder → ProMixEZ Setup icon.

[ProMixEZ Log - Used to download Machine Logs](#)

This program will generate 2 logs: RUN LOG and ALARM LOG. (Run log Volume Units is cm³)

The logs will be downloaded (by default) in **C:\PROMIXEZ folder**

Upon starting (clicking) on the icon, a Terra Term emulator window opens.

The user will be asked to save the first log (The RUN LOG)

Name the file with a date and identify it for later use.

Example : Run_log_April_17_2k8. Click OK.

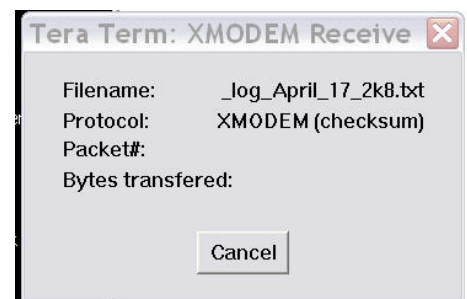
The program will append a txt termination to the file.



The transfer window will open.

The data will start transferring.

Data transferred can be seen in real time as “Bytes transferred”.



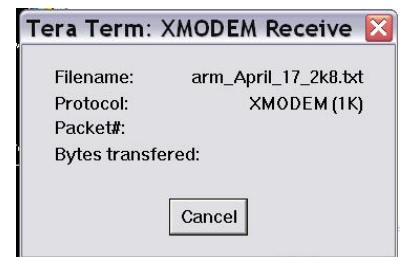
Technical Bulletin

When download is finished, the Alarm Log transfer window will open.

Name it as above.

Append an "Alarm" name to the log for ease of identification when viewed.

The Transfer window will open. Data transferred can be seen in real time as "Bytes transferred".

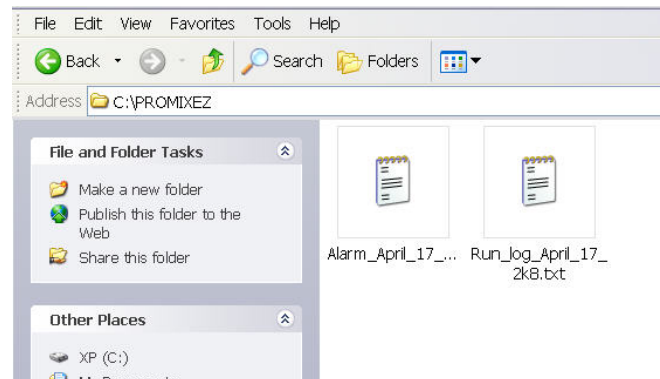


NOTE: IF THERE IS NO DATA TRANSFER SEEN ON EITHER OF THESE SCREENS, CHECK YOUR CONFIGURATION SETTINGS. COM PORT and protocol.

Even if the program cannot transfer data, these two screens will come up. They will close after a timeout period.

When both logs are transferred, the program closes by itself. No other user input required.

Go to My Computer → Click on drive C → Select folder PROMIXEZ to view saved logs.



The logs cannot be reset. They will write an approximate of 1000 lines, and then write the new information over.

The Fluid Volume Measurement Units for A total and B total on Run Log are in CC's . (CM³)