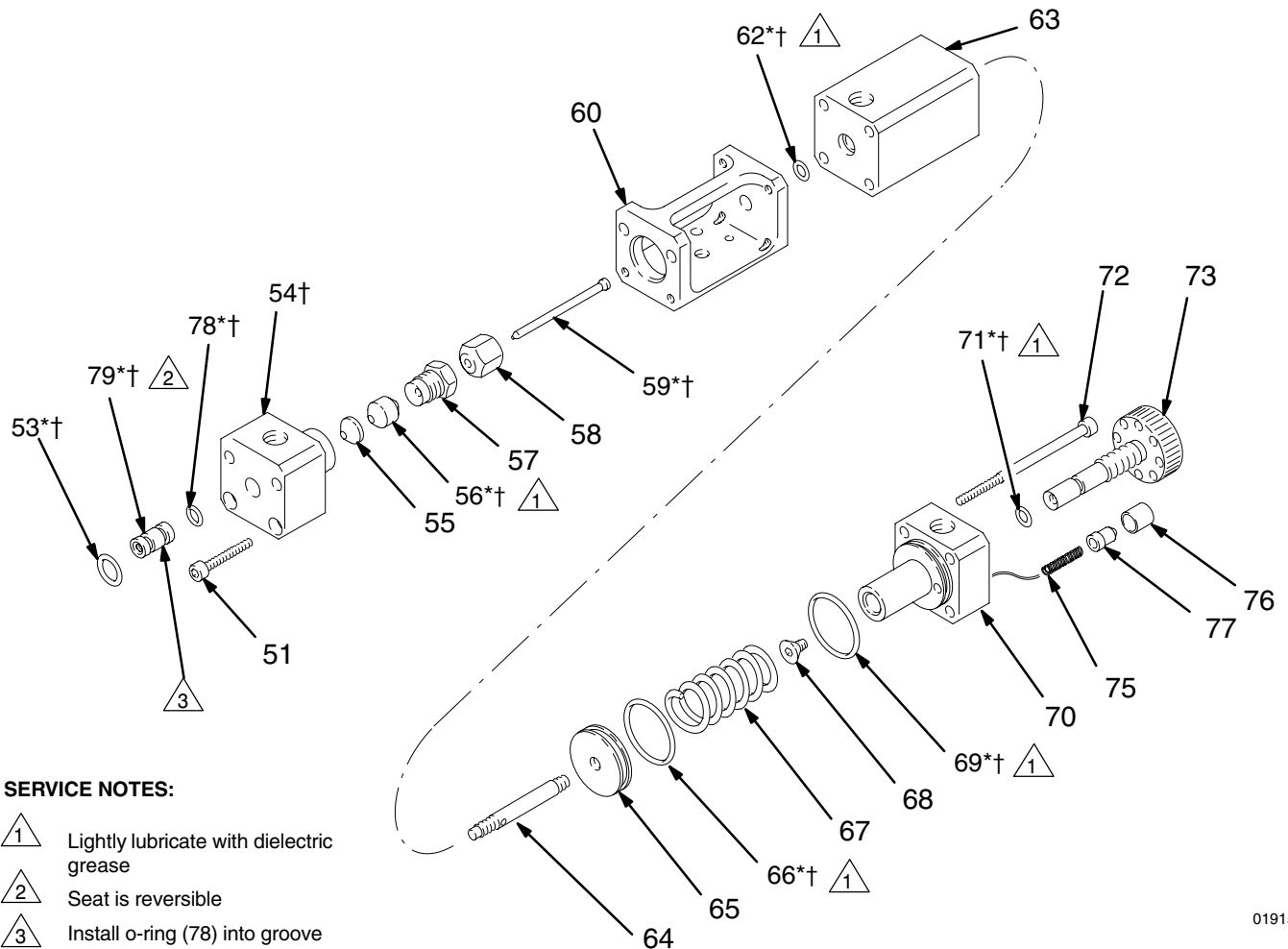


# Purge Valve Parts

## Part No. 236929, Purge Valve

Ref. No.	Part No.	Description	Qty.	Ref. No.	Part No.	Description	Qty.
51	111119	SCREW, socket head; M4 x 0.7 x 25 mm	2	71*†	111139	O-RING, Buna-N	1
53*†	111457	O-RING, PTFE	1	72	111140	SCREW, socket head; M4 x 0.7 x 70 mm	4
54†	190442	HOUSING, fluid (see NOTE, below)	1	73	111141	KNOB, adjustment	1
55	111123	GLAND, female	1	75	112676	SPRING, compression	1
56*†	111124	PACKING, fluid	1	76	190046	BUSHING, detent pin	1
57	189904	NUT, packing	1	77	112658	PIN, detent	1
58	190054	COUPLING, valve	1	78*†	111516	O-RING, CV75	1
59*†	190441	NEEDLE, fluid (see NOTE, below)	1	79*†	190609	SEAT, needle	1
60	190037	HOUSING, valve	1	* These parts are included in Repair Kit 237948, which may be purchased separately.			
62*†	156454	O-RING, Buna-N	1	† These parts are included in Conversion Kit 238242, which may be purchased separately.			
63	190036	VALVE CYLINDER	1	<b>NOTE:</b> Conversion Kit 238242 is needed when converting the purge valve to the replaceable seating configuration. The needle (item 59) and housing (item 54) from the previous purge valve assembly, part no. 224064, are not compatible with the new configuration.			
64	111132	ROD, piston	1				
65	111133	PISTON, valve	1				
66*†	104093	O-RING, Buna-N	1				
67	111135	SPRING	1				
68	112850	SCREW; M5 x .8 x 8.0 mm	1				
69*†	111137	O-RING, Buna-N	1				
70	190038	AIR CYLINDER	1				



### SERVICE NOTES:

- △ 1 Lightly lubricate with dielectric grease
- 2 Seat is reversible
- 3 Install o-ring (78) into groove

01915B