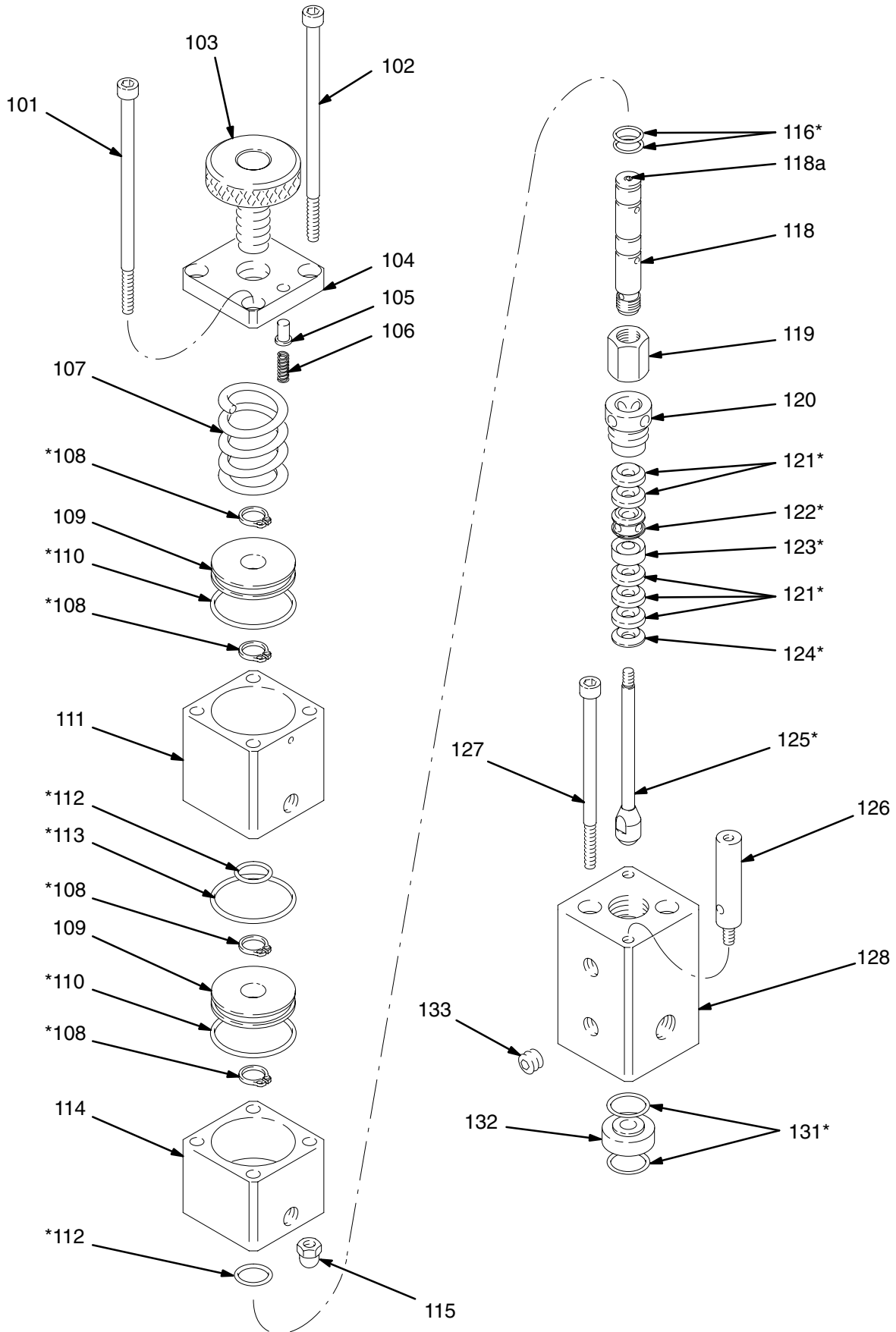


Dispense Valve Parts



Dispense Valve Parts

Part No. 236930, Dispense Valve

Ref. No.	Part No.	Description	Qty.	Ref. No.	Part No.	Description	Qty.
101	111086	SCREW, socket head; M6 x 1.0 x 100 mm	2	119	111104	COUPLING, valve	1
102	111087	SCREW socket head; M6 x 1.0 x 90 mm	2	120	190045	NUT, packing	1
103	238240	KNOB, adjustment	1	121*	111106	PACKING, valve	5
104	190042	CAP, air cylinder	1	122*	189902	GLAND, male	1
105	111090	PIN, detent	1	123*	111108	GLAND, female	1
106	112293	SPRING	1	124*	189901	GLAND, male	1
107†	111092	SPRING, shutoff	1	125*	236928	FLUID NEEDLE ASSY., 10 mm	1
108*	15E017	RING, retaining	4	126	189905	ROD, spacer	2
109	111094	PISTON, valve	2	127	111112	SCREW, socket head; M6 x 1.0 x 80 mm	2
110*	111095	O-RING, Buna-N	2	128	189907	HOUSING, fluid	1
111	190040	AIR CYLINDER	1	131*	111116	O-RING, PTFE	2
112*	801050	O-RING, Buna-N	2	132	189903	SEAT, fluid valve	1
113*	111098	O-RING, Buna-N	1	133	110208	PLUG, pipe	2
114	190041	VALVE CYLINDER	1	* These parts are included in Repair Kit 15E013, which may be purchased separately.			
115	111100	NUT, hex cap; M6 x 1.0	2	† When operating at fluid pressures above 3000 psi (21 MPa, 207 bar), replace 111092 standard shutoff spring with the high pressure spring in Kit 239954. See page 35 to order kit.			
116*	155685	O-RING, Buna-N	2				
118	15E010	SHAFT, valve kit; Includes item 118a	1				
118a	111102	•SCREW, M4 x 0.7 x 4.0 mm	1				