

Thank you for purchasing the Meiji spray gun.

## Introduction

- This operation manual explains how to use the spray gun and gives precautions to observe in using the spray gun. Be sure to read this manual carefully before using the spray gun for correct use of the gun.
- After reading, keep this manual in a place near where the spray gun is being used.
- In case this spray gun is loaned or sold to others, be sure this manual accompanies the spray gun.
- If this manual should be lost or damaged, place an order with us or the agent or sales shop for a replacement.
- Parts of the equipment may be changed for improvement of quality, function or safety of the product. In such cases, a part of the contents or illustrations in this manual may not be the same with the actual product.
- If there should be any part of this manual which is not clear or which you feel should be brought to our attention, please consult with the store where you bought this spray gun or the nearest agent or sales shop of this spray gun.
- The following ▲ mark indicates items which are especially important from the point of safety. Be absolutely sure to observe such items.

## ▲ Caution

This mark indicates advice on safe handling or indicates the possibility of injury to humans or serious damage to products if proper precautions are not taken.

- 1) Be sure to conduct spraying work in a spray booth or where adequate ventilation is provided. The worker is subject to risk of being poisoned by organic solvents if work is performed in a closed room or where ventilation is not sufficient. Also make it mandatory for workers to wear masks and other protective gear for protection.
- 2) Organic solvents filling a closed room pose a risk of fire or explosion. Do not use this equipment near fire or where there is risk of ignition. Also take care to prevent generating of static electricity.
- 3) When connecting the paint cup, air hose to the spray gun, use a monkey wrench and tighten securely. If loosely connected, pressured air, paint and/or various liquids may be sprayed on people, work being painted or on equipment in the vicinity when the spray gun is used, causing damage.
- 4) Be sure not to use the hoses with pressures exceeding specified limits or an old hose which has been damaged by scratching etc.
- 5) Use clean solvents in the spray gun. Paint residue or refuse in the paint circuit may cause trouble while cleaning thinner remaining in the gun and in the cup may result in faulty painting.
- 6) Never pull the trigger of the spray gun with the gun pointed at people.






## 1. How to use.

- 1) Paint Cup and Air Hose must be fixed on Spray Gun tight with the spanner attached.
- 2) 0.2MPa will be the most adequate spraying air pressure though it may vary depending on viscosity, nature and work condition of paint.
- 3) 10 to 15 cm will be the most proper distance for spray work. Fine paint finish cannot be expected if sprayed either too close, too far or being swung circularly.
- 4) Air eliminates dust sprayed article by pulling trigger when Fluid Adjusting Screw is fully tightened clockwise.
- 5) Air Cap should be placed with top of Fluid Nozzle extruded about 0.1-0.2mm ahead from front face of the Air Cap and fixed tight with attached Cap Lock Nut.(FS-GR only).
- 6) Volume of air is adjusted by Air Adjusting Screw. In case of turning fully it clockwise, no air comes out and air increases in case of turning it anti-clockwise. Volume of fluid is adjusted by Fluid Adjusting Screw likewise.
- 7) Sprayed pattern becomes "round" in case of turning fully Spreader Adjusting Screw clockwise and "oval" in case of turning it anti-clockwise.(FSA-G only).

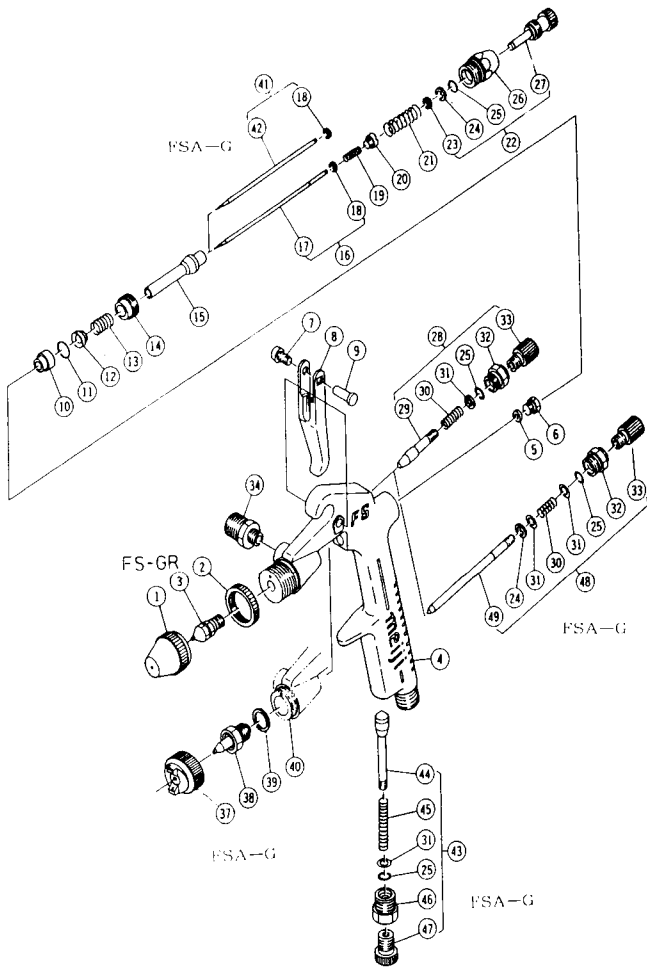
## 2. Maintenance.

- 1) Soak the whole Gun Body into clean solvent and cleanse it well.  
Clean solvent must be used for dust not to enter the air passage and make trouble.
- 2) First, disassemble Air Cap and Fluid Nozzle. Soak them in solvent and then wash them with a brush or the like.  
Care must be taken not to hurt Fluid Nozzle of FS-GR and it should be disassembled with a spanner on the second hexagon portion from front side
- 3) Cleaning of paint passage must be done in a manner to spray a little amount of solvent as if the gun is used for actual spray work.
- 4) Fasten the Needle Packing Screw by pulling the Trigger and adjusting the screw so as not to fasten it too tight.
- 5) Care must be taken absolutely not to hurt each hole of Air Cap and the center hole of Fluid Nozzle.

### 3. Trouble Shooting Chart.

Symptom	Possible cause (s)	Corrective Action
Paint breaking 	1. Air gets mixed with paint in the paint passage attributable to Needle Packing being worn out. 2. Loosen or scar (s) on matching portion in between Fluid Nozzle and taper seat face. 3. Air mixing attributable to loosening of coupling nut of Paint Cup.	1. Replace Needle Packing with new one, or tighten the Packing Screw furtherer. 2. Complete the fastening. Or, replace the faulty part. 3. Tighten it perfectly.
One-sided pattern 	1. A portion of square bore of Air Cap is clogged 2. Adhesion of solid dirt at the top of Fluid Nozzle.	1. Dirt inside square bore must be eliminated. (Needle or wire must not be used.)
Crescent pattern 	1. A portion of square bore of Air Cap is clogged.	1. Eliminate the dirt from the square bore.
Narrow pattern 	1. Air pressure from the square bore of Air Cap is critically high. 2. Paint viscosity is too thin.	1. Reduce the air pressure. 2. Adjust paint viscosity
Thick pattern 	1. Clearance between Nozzle outside diameter and the center bore of Air Cap gets worn wider 2. Air pressure from the square bore of Air Cap gets excessively low. 3. Paint viscosity is excessively high.	1. Replace the part with new one. 2. Rate up spraying pressure. 3. Adjust paint viscosity.

## “MEIJI” FS-GR SPRAY GUN FSA-G SPARE PARTS LIST



### PARTS LIST FSX-GR

1	Air Cap	1
2	Cap Lock Nut	1
3	Fluid Nozzle	1
4	Body	1
5	Needle Packing	2
6	Needle Packing Screw	1
7	Trigger Bearing Screw	1
8	Trigger	1
9	Trigger Bearing Stud	1
10	Sleeve	1
11	O Ring (P-4 Teflon)	1
12	Valve Packing Push	1
13	Packing Push Spring	1
14	Valve Seat	1
15	Air Valve	1
16	Needle Valve Ass'y	1
19	Needle Spring	1
20	Needle Spring stop	1
21	Valve Spring	1
22	Fluid Adjusting Screw Ass'y	1
28	Plug (M9×1)	1
34	Nipple (1/4×M8)	1

### FSA-G

37	Air Cap Ass'y	1
38	Fluid Nozzle	1
39	Packing 36	1
40	Body	1
41	Needle Valve Ass'y	1
43	Air Adjusting Valve Ass'y	1
48	Spreader Adjusting Valve Ass'y	1
Others: Same as parts of FS-GR		