

LEGACY™

High Efficiency Extended Surface Filters with Channel Flow Molded Media

Model Number	Nominal Size (HxWxD) Inches	Actual Size (HxWxD) Inches	Rated Air Flow Capacity (CFM)	Initial Resistance (In. W. G.) @Rated Air Flow MERV 14,15	Initial Resistance (In. W. G.) @Rated Air Flow MERV 11	Recommended Final Resistance (In. W. G.)
--------------	-----------------------------	----------------------------	-------------------------------	---	--	--

12" Packs - Single Header

LG-604	24x24x12	23 ³ / ₈ x 23 ³ / ₈ x 11 ¹ / ₂	2000	-	.26"	1.5"
LG-615	20x24x12	19 ³ / ₈ x 23 ³ / ₈ x 11 ¹ / ₂	1650	-	.26"	1.5"
LG-613	20x20x12	19 ³ / ₈ x 19 ³ / ₈ x 11 ¹ / ₂	1400	-	.26"	1.5"
LG-603	12x24x12	11 ³ / ₈ x 23 ³ / ₈ x 11 ¹ / ₂	1000	-	.26"	1.5"
LG-904	24x24x12	23 ³ / ₈ x 23 ³ / ₈ x 11 ¹ / ₂	2000	.34"	-	1.5"
LG-915	20x24x12	19 ³ / ₈ x 23 ³ / ₈ x 11 ¹ / ₂	1650	.34"	-	1.5"
LG-913	20x20x12	19 ³ / ₈ x 19 ³ / ₈ x 11 ¹ / ₂	1400	.34"	-	1.5"
LG-903	12x24x12	11 ³ / ₈ x 23 ³ / ₈ x 11 ¹ / ₂	1000	.34"	-	1.5"

4" Packs

LG4-604	24x24x4	23 ³ / ₈ x 23 ³ / ₈ x 3 ³ / ₄	2000	-	.23"	1.5"
LG4-612	20x25x4*	19 ³ / ₈ x 24 ³ / ₈ x 3 ³ / ₄	1750	-	.23"	1.5"
LG4-615	20x24x4	19 ³ / ₈ x 23 ³ / ₈ x 3 ³ / ₄	1650	-	.23"	1.5"
LG4-613	20x20x4	19 ³ / ₈ x 19 ³ / ₈ x 3 ³ / ₄	1400	-	.23"	1.5"
LG4-610	16x25x4*	15 ³ / ₈ x 24 ³ / ₈ x 3 ³ / ₄	1400	-	.23"	1.5"
LG4-609	16x20x4	15 ³ / ₈ x 19 ³ / ₈ x 3 ³ / ₄	1100	-	.23"	1.5"
LG4-603	12x24x4	11 ³ / ₈ x 23 ³ / ₈ x 3 ³ / ₄	1100	-	.23"	1.5"
LG4-904	24x24x4	23 ³ / ₈ x 23 ³ / ₈ x 3 ³ / ₄	2000	.43"	-	1.5"
LG4-912	20x25x4*	19 ³ / ₈ x 24 ³ / ₈ x 3 ³ / ₄	1750	.43"	-	1.5"
LG4-915	20x24x4	19 ³ / ₈ x 23 ³ / ₈ x 3 ³ / ₄	1650	.43"	-	1.5"
LG4-913	20x20x4	19 ³ / ₈ x 19 ³ / ₈ x 3 ³ / ₄	1400	.43"	-	1.5"
LG4-910	16x25x4*	15 ³ / ₈ x 24 ³ / ₈ x 3 ³ / ₄	1400	.43"	-	1.5"
LG4-909	16x20x4	15 ³ / ₈ x 19 ³ / ₈ x 3 ³ / ₄	1100	.43"	-	1.5"
LG4-903	12x24x4	11 ³ / ₈ x 23 ³ / ₈ x 3 ³ / ₄	1100	.43"	-	1.5"

* Reverse size pleat on 25" height product.

IMPORTANT NOTES:

1. All performance data is based on the ASHRAE 52.2 Test Standard
2. Width and height dimensions are interchangeable. LEGACY filters can be installed with the pleats vertical or horizontal
3. Continuous Operating Temperature: 140°F (60°C).

Underwriters Laboratories Inc. Classification:

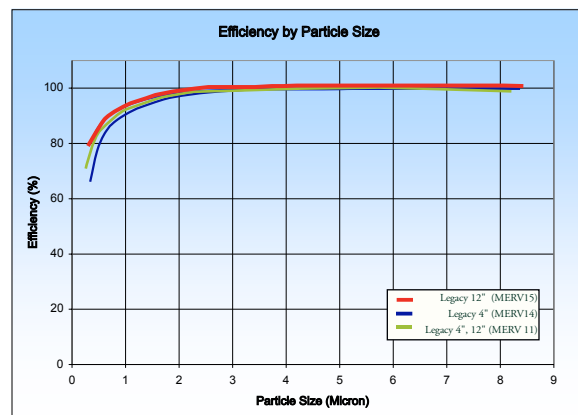
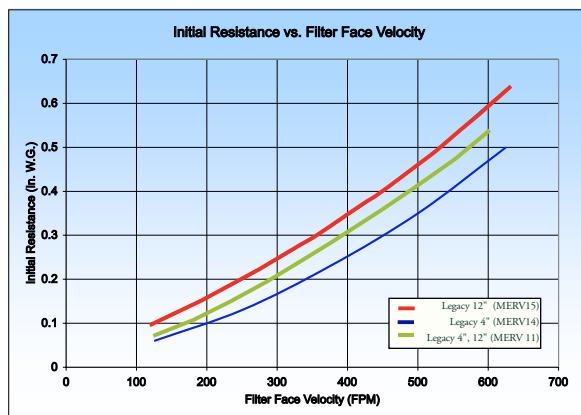
LEGACY filters are classified Class 1 per U.L. Standard 900.

Energy Savings Calculator available online at www.airguard.com



Sustainable Component for a LEED/Green Building Initiative.

Exceeds LEED/Green requirement of MERV 13. (Leadership in Engineering and Environment Design) www.usgbc.org



A-LEG-0208



a CLARCOR company



CLARCOR Air Filtration Products

P. O. Box 32578 • Louisville, KY 40232

Customer Service Team: 1-866-247-4827 • Fax: 1-800-784-3458

Email: mailbag@airguard.com • www.airguard.com

www.airguard.com



Distributed by:

© 2008 CLARCOR Air Filtration Products. CLARCOR Air Filtration Products has a policy of continuous product research and development and reserves the right to change design and specifications without notice. Terms and Conditions of Sale can be accessed in the "LOGIN" section at www.airguard.com



LEGACY™

High Efficiency Rigid Cell

Extended Surface Filters

4" (MERV 11 & 14) and 12" Depths (MERV 11 & 15)

AIRGUARD, a CLARCOR Company, is very excited to announce the release of a "NEW" filter called **LEGACY™** 4" and 12" High Efficiency Rigid Cell Extended Surface Filter.

* 4" offered in MERV 11 & 14 and 12" offered in MERV 11 & 15

The new AIRGUARD **LEGACY™** high efficiency filter is a perfect sustainable component for your next LEED/Green Building initiative. The **LEGACY™** is a MERV 15 (Standard 52.2 Minimum Efficiency Reporting Value) product with extremely low initial resistance characteristics. MERV 15 is hospital compliant for full patient care. The **LEGACY™** will help you increase your overall filter efficiency, to exceed LEED requirements of MERV 13, while maintaining or lowering your energy costs.

For more information regarding the new **LEGACY™** from AIRGUARD, please contact your nearest **AIRGUARD Stocking Distributor**, local AIRGUARD Territory Manager or a Customer Service Associate at 1-866-247-4827. You can also click the **Distributor Locator Button** at www.airguard.com



Patent #6,685,833 



12" with
Single Header

Unique Channel Flow Molded Media:

- 4" is MERV 11 & 14 and 12" is MERV 11 & 15
- Very Low Resistance
- High Dust Holding Capacity
- All Plastic Construction
- Light Weight
- Class 1 per U.L. Standard 900

LEED/Green Building

- Sustainable Component for a LEED/Green Building Initiative (Leadership in Engineering and Environment Design)
- Exceeds LEED/Green requirement of MERV 13
- Lower Energy Cost

LEGACY™

High Efficiency Extended Surface Filters with
Channel Flow Molded Media



4" Deep Filters - MERV 11 & 14

For use where space is limited. 4" deep LEGACY filters operate at 500 FPM at substantially lower resistance than competitive 4" - 6" deep filters.

12" Deep Filters - MERV 11 & 15 Single Header Construction

LEGACY filters replace traditional 12" deep rigid cell filters operating at 500 - 625 FPM with substantially lower resistance.



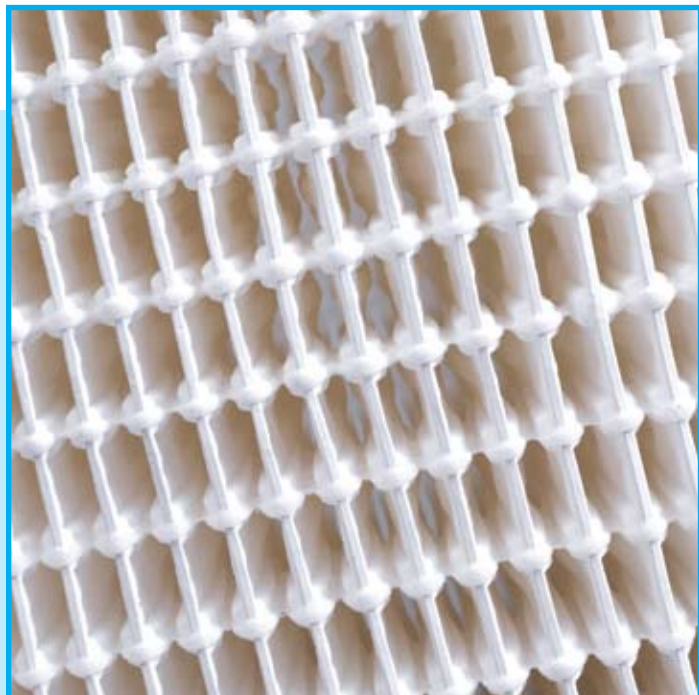
a CLARCOR company



Unique Channel-Flow Molded Media Produces Lowest Resistance

LEGACY media is molded into a series of preformed channels that direct the air smoothly through the filter. This unique process results in the lowest resistance of any high efficiency filter on the market. Low resistance maximizes energy savings.

LEGACY Close up view shows how beads of adhesive applied to the media hold the channels open to permit free flow of air for low resistance and complete use of the media.



High Efficiency, Low Resistance,
Rigid Cell Construction Designed for
Difficult Operating Conditions



Reverse Flow Installation For Front Load Applications (12" Deep Filters)

For front load installations, or where there is no down stream access, 12" deep LEGACY filters are available in a reverse flow model.

Glue Bead Adhesive Strips Stabilize Pleat Pack

Beads of adhesive applied to the media bond the pleats into a totally rigid, solid pack. The pleats hold their shape and the molded channels are held open for free flow of air in all types of operating conditions. No pleat deformation, no blocking off.



2" & 4" Pre-filter
clips hold the prefilter
to the Reverse Flow
LEGACY filter.

Rigid Cell Design Handles Difficult Operating Conditions

Rigid cell design, all plastic components and Dura-Tuff 100% synthetic media make Legacy filters ideal for the most demanding operating conditions, including variable air volume systems, high air flow, turbulence, repeated fan shut down, high moisture, and some chemical or corrosive conditions. These filters are designed for tough installations.

Full Media Exposure Produces High Dust Holding Capacity

The Channel-Flow molded media design not only produces low resistance, it also allows the media to be completely exposed to dirt laden air. Dirt loads evenly over every square foot of filter surface area for maximum dust holding capacity and long service life.

All Plastic Construction – Completely Incinerable, Light Weight

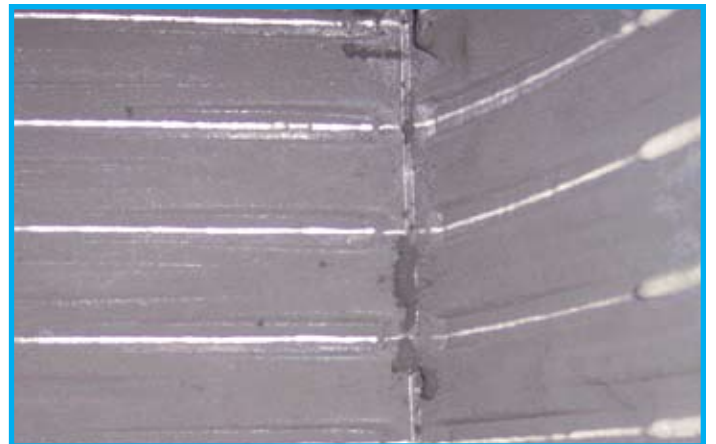
The cell sides are made of high strength, high impact polystyrene plastic. They are moisture, chemical and corrosion resistant. Legacy filters contain no metal components – no rust, no corrosion. The elimination of metal also makes these filters completely incinerable and light weight.



Various sized metal frames are available to make the LEGACY suitable for most any application.

Dura-Tuff™ 100% Synthetic Media

LEGACY filters are made with Dura-Tuff synthetic media. It is extremely durable, resists tearing, abrasion and is highly damage resistant. No more media damage during shipping, handling or installation. Dura-Tuff media is also unaffected by exposure to moisture and some chemicals. This media is just plain tough.



See how the preformed channels allow dirt to be collected all the way to the back of the pleats. Every square foot of media is fully utilized for maximum dust capacity.